

Construction Package

Basement Rain Garden

Image Source: Frank Mayfield. "Carex Stricta Common" 23 May 2008 via Flickr, CC BY-SA 2.0



Basement Rain Garden Construction Plan

Design Notes

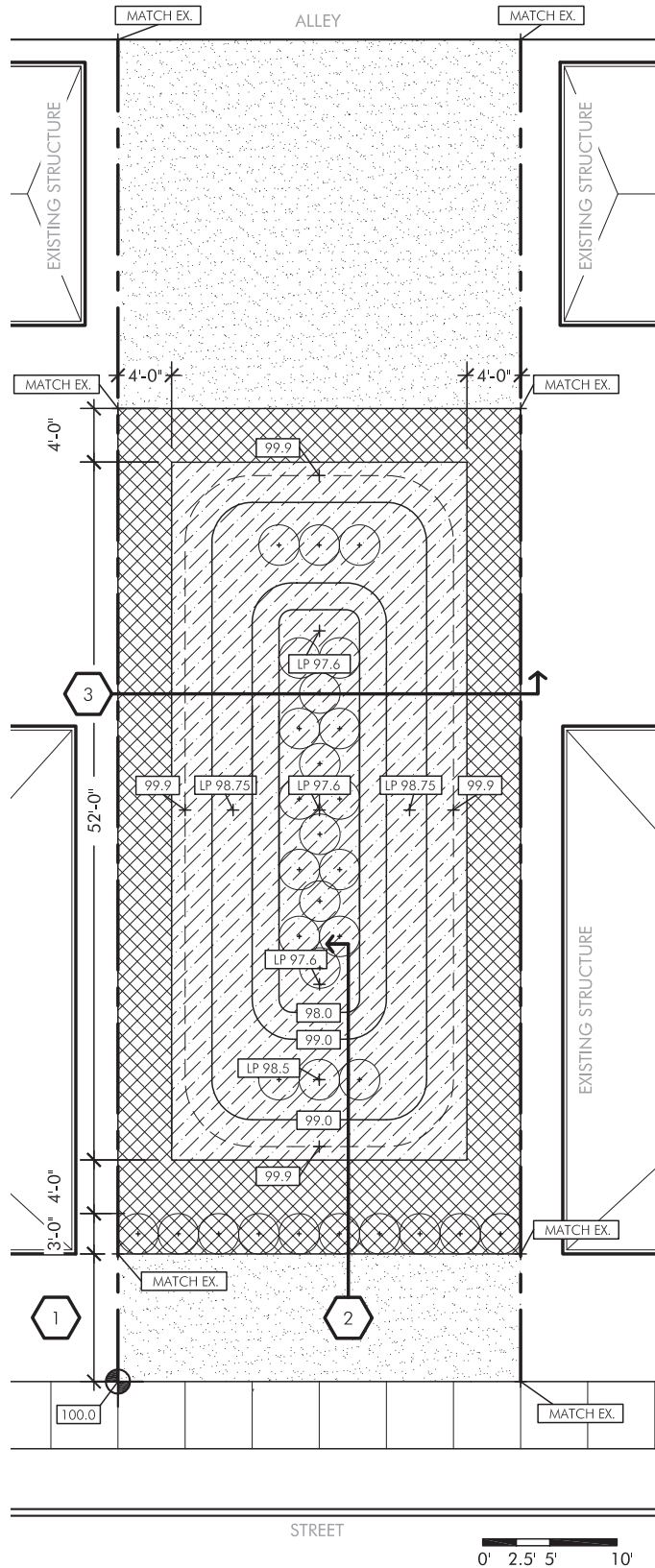
1.	It is the responsibility of the contractor to construct treatment in accordance with the published specifications of Detroit Future City Field Guide to Working with Lots . This information is available at www.DFC-lots.com
2.	Existing grade is assumed to be +100.0. Grades are relative and should be adjusted to work with the topography of the selected site.

Keyed Notes

	Align shrubs with adjacent structures as shown.
	See Detail 1 - Hedge Section
	See Detail 2 - Rain Garden Section





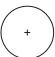
Legend

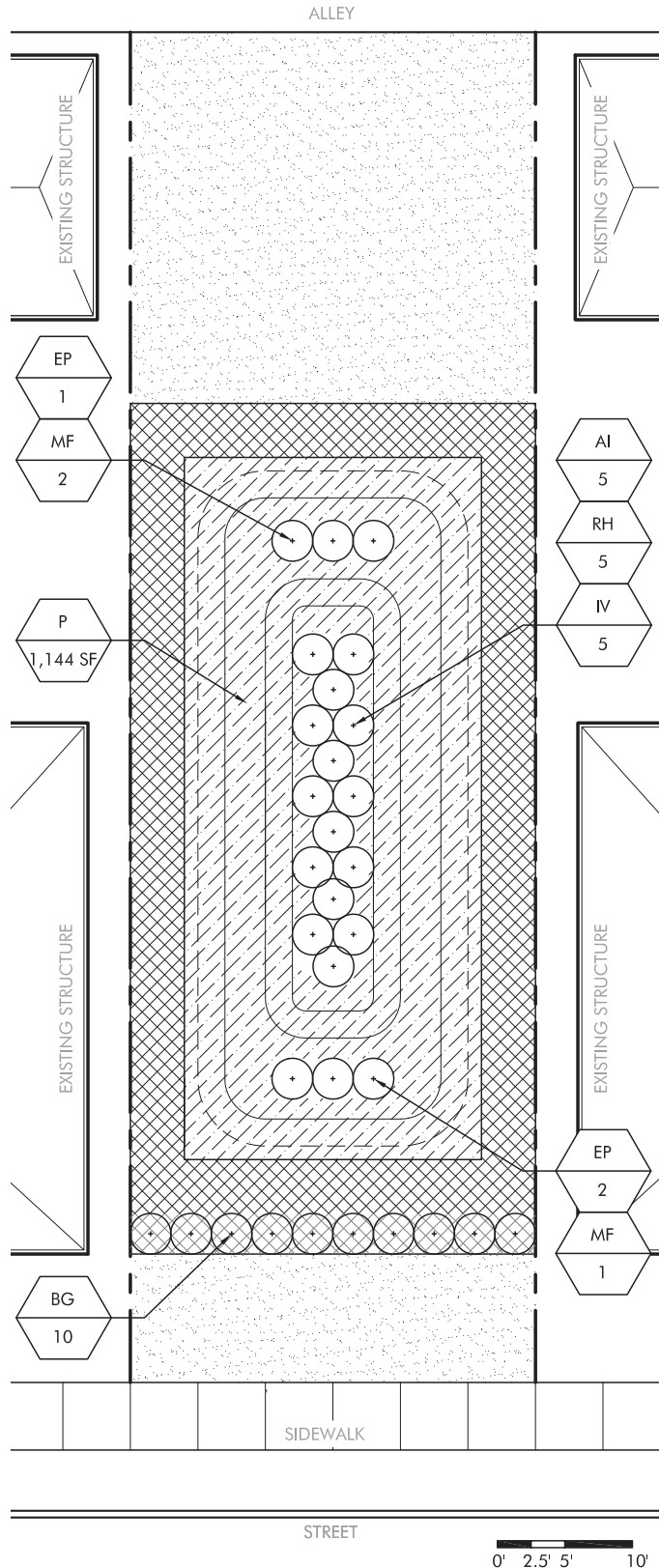
	Property Line
	Contour
	Spot elevation
	Low Point
	Point of Beginning
	Shrub
	Low Maintenance Turf
	Rain Garden Seed Mix
	Mulch
	Shrub



Basement Rain Garden Planting Plan

Planting Notes				
1.	Boxwood planting bed to be covered with 3" of mulch.			
2.	Coordinate layout of perennials with owner prior to installation.			
Plant List				
AI	5	Swamp Milkweed <i>Asclepias incarnata</i>	#5 Pot	Space 1.5' O.C.
BG	10	Green Gem Boxwood <i>Buxus 'Green Gem'</i>	#5 Pot	Space 2' O.C.
EP	3	Purple Coneflower <i>Echinacea purpurea</i>	#5 Pot	Space 1.5' O.C.
IV	5	Blue Flag Iris <i>Iris virginiana</i>	#3 Pot	Space 1.5' O.C.
MF	3	Bee Balm <i>Monarda fistulosa</i>	#5 Pot	Space 1.5' O.C.
P	1,144 SF	Rain Garden Seed Mix	Seed	
RH	5	Black-eyed Susan <i>Rudbeckia hirta</i>	#3 Pot	Space 1.5'
Legend				

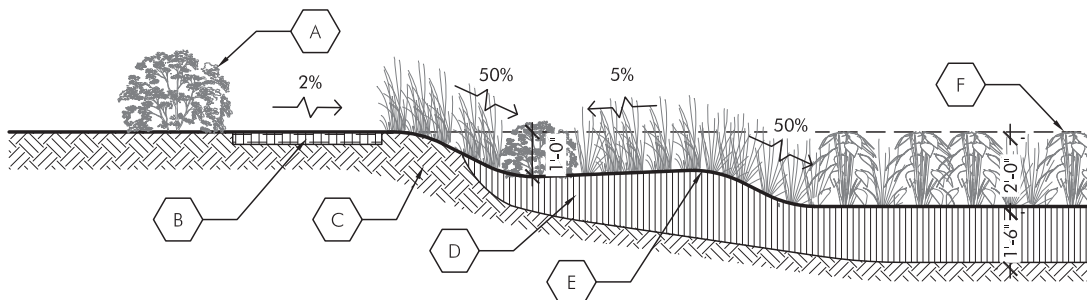
-  Property Line
-  Low Maintenance Turf
-  Rain Garden Seed Mix
-  Mulch
-  Shrub



Basement Rain Garden Details

Detail 1 - Hedge Section

- A Align shrub with adjacent structures
 - B 4" thick mulch path
 - C Existing soil
- D Rain garden planting soil
 - E Proposed finish grade
 - F Existing grade



Detail 2 - Rain Garden Section

- A Property line - slope grade to prevent stormwater runoff onto adjacent property
 - B 4" thick mulch path
 - C Existing soil
- D Rain garden planting soil
 - E Existing grade

