

Construction Package



Paisley Patch

Image Source: TM Weddle, "Ravine - Ajuga - April 25." 25 April 2010 via Flickr CC BY-NC-SA 2.0.



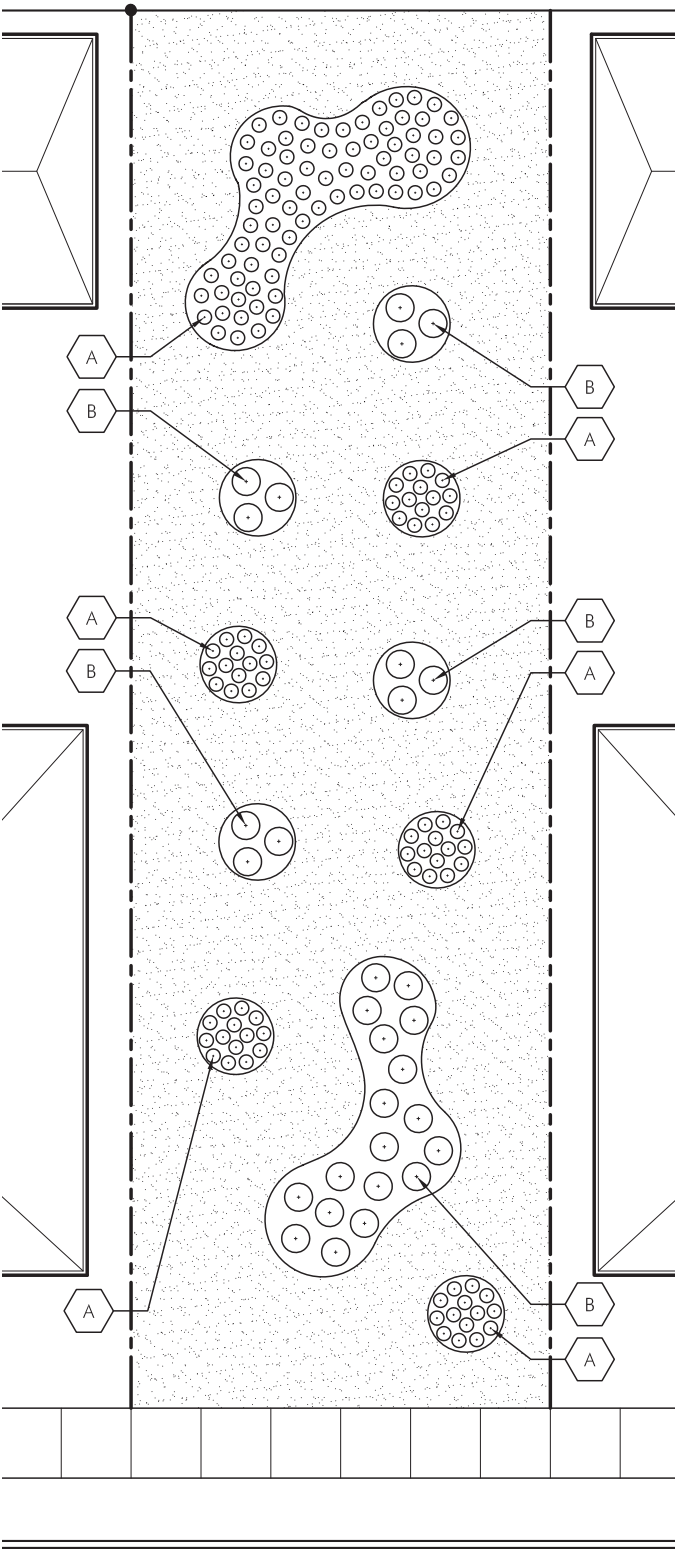
**working
with lots**

A FIELD GUIDE

Paisley Patch Planting Plan: Full Sun to Part Sun

Design Notes	
1.	It is the responsibility of the contractor to construct treatment in accordance with the published specifications of Detroit Future City Field Guide to Working with Lots . This information is available at www.DFC-lots.com
2.	This lot design has multiple planting options. Plan illustrates conceptual plant layout. Consult with owner to determine plant species, quantity and location prior to installation.
3.	Cover all landscape beds with 3" of mulch.
Plant List - A	
Mojita Mint <i>Mentha x villosa 'Mojito'</i>	#3 Pot
Lemon Balm <i>Melissa officinalis</i>	#3 Pot
Spearmint <i>Mentha spicata</i>	#3 Pot
Plant List - B	
Six Hill Giant Catmint <i>Nepeta x baassenii 'Six Hills Giant'</i>	#3 Pot
Walker's Low Catmint <i>Nepeta x faassenii 'Walker's Low'</i>	#3 Pot
Oregano <i>Origanum vulgare</i>	#3 Pot
Red Creeping Thyme <i>Thymus praecox 'Coccineus'</i>	#3 Pot
Legend	

- Property Line
- Low Maintenance Turf
- + Perennial



0' 2.5' 5' 10'

Paisley Patch Planting Plan: Full Shade to Part Shade

Design Notes

1.	It is the responsibility of the contractor to construct treatment in accordance with the published specifications of Detroit Future City Field Guide to Working with Lots . This information is available at www.DFC-lots.com
2.	This lot design has multiple planting options. Plan illustrates conceptual plant layout. Consult with owner to determine plant species, quantity and location prior to installation.
3.	Cover all landscape beds with 3" of mulch.




Plant List - A

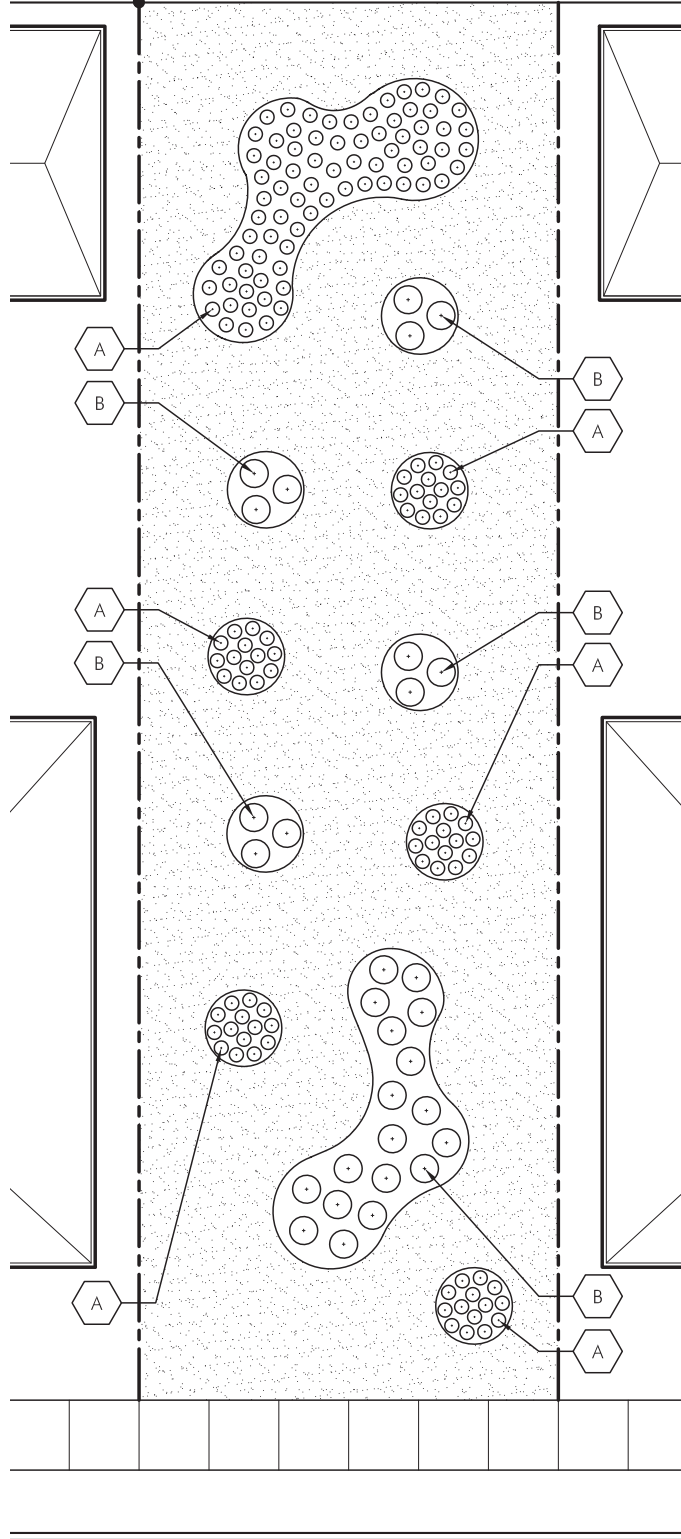
Catlin's Giant <i>Ajuga reptans 'Catlin's Giant'</i>	#3 Pot
Bronze Beauty Bugleweed <i>Ajuga reptans 'Bronze Beauty'</i>	#3 Pot

Plant List - B

Bressingham Ruby Berenia <i>Bergenia 'Bressingham Ruby'</i>	#3 Pot
Jack Frost Bugloss <i>Brunnera macrophylla 'Jack Frost'</i>	#3 Pot
Lily of the Valley <i>Convallaria majolis</i>	#3 Pot

Legend

-  Property Line
-  Low Maintenance Turf
-  Perennial



0' 2.5' 5' 10'